

Light efficiency:

50 Lumen/Watt

Light quality:

CRI: 89.6

Color temperature:

5781 K

Output: 18273 lm

Peak: 136870 cd

Power: 368 W

PF: 1.0

No photo

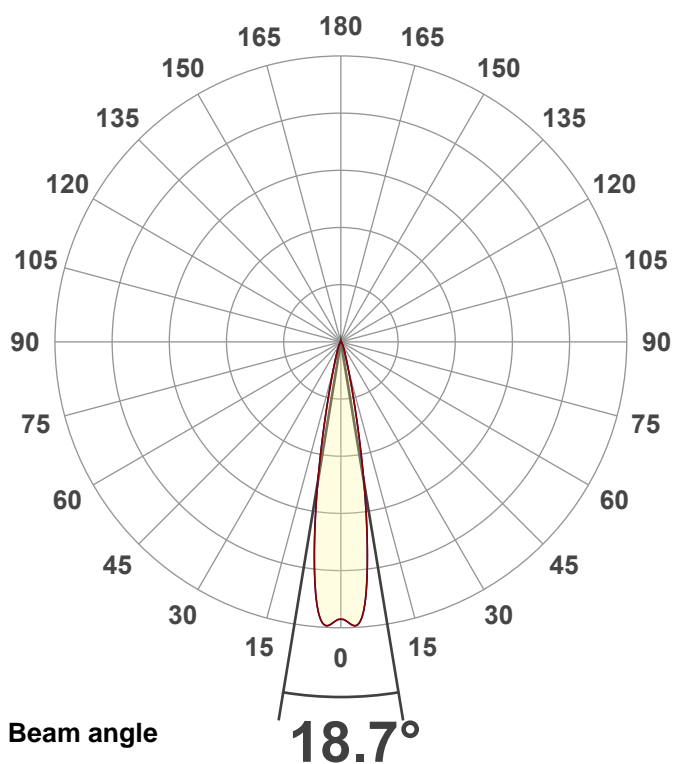
Product name:

40 Hex Panel IP (Full On,5600K)

Item number:

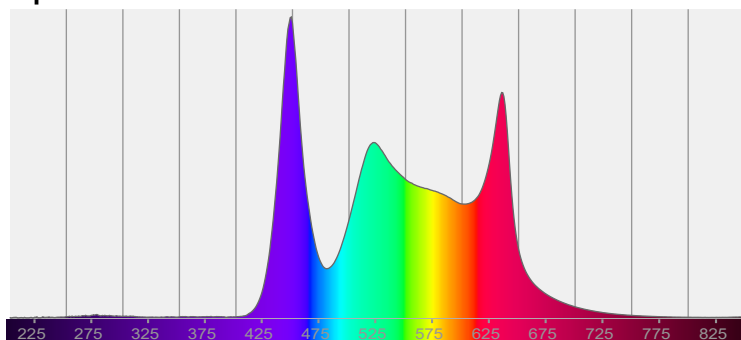
Date and time:

10/9/2025 2:46:47 PM



CIE 1931  
x: 0.327  
y: 0.333

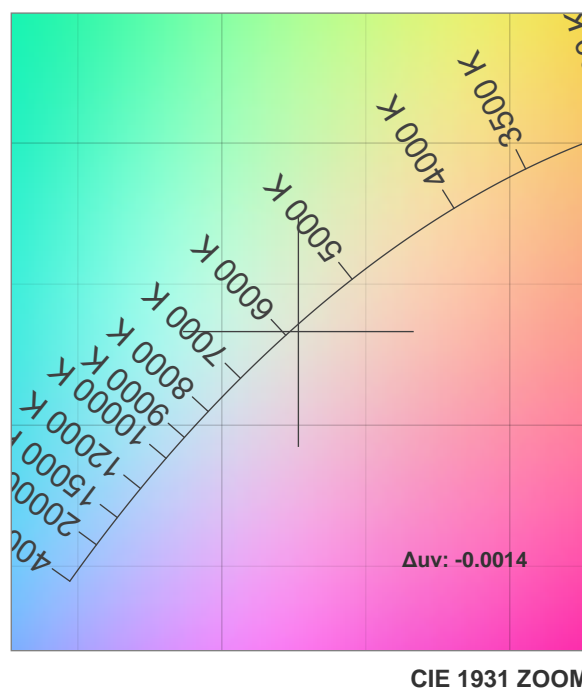
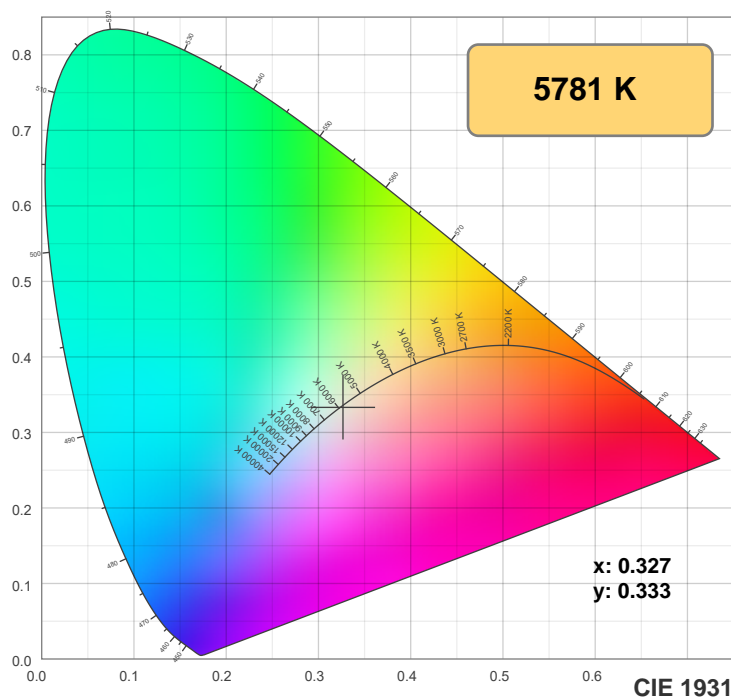
Spectra



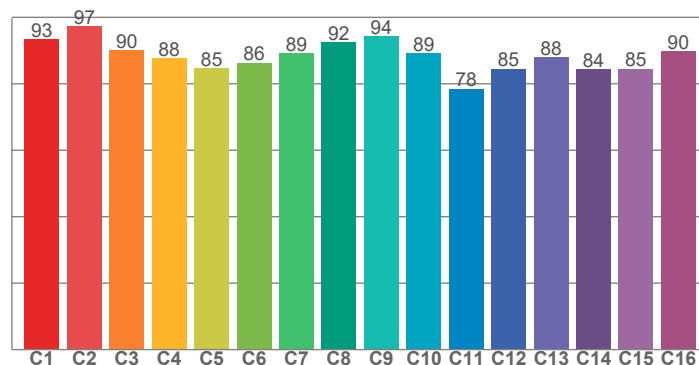
Power

Voltage: 115 V  
Current: 3.20 A  
Frequency: 0 Hz

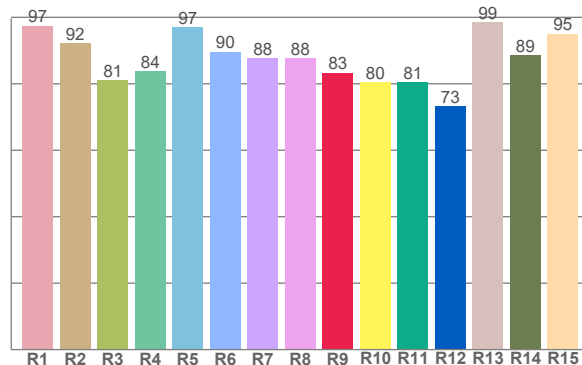
## Color details



**TM-30: 88.3**



**CRI: 89.6 (R1-R8)**



CRI R values, only R1-R8 are used to calculate final CRI value

R1	R2	R3	R4	R5	R6	R7	R8	R9	R10	R11	R12	R13	R14	R15
97.5	92.3	81.0	83.7	97.0	89.7	87.7	87.6	83.4	80.4	80.5	73.3	98.6	88.5	95.1

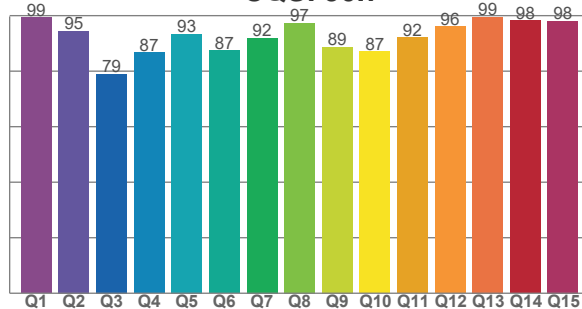
TM30 C values, 16 binned values out of total of 99 C values

C1	C2	C3	C4	C5	C6	C7	C8	C9	C10	C11	C12	C13	C14	C15	C16
93.3	97.2	90.0	87.7	84.6	86.3	89.2	92.5	94.3	89.1	78.4	84.6	88.0	84.4	84.5	89.8

CQS Q values

Q1	Q2	Q3	Q4	Q5	Q6	Q7	Q8	Q9	Q10	Q11	Q12	Q13	Q14	Q15
99.3	94.6	79.0	86.7	93.4	87.5	91.9	97.4	88.7	87.1	92.0	96.1	99.4	98.3	98.1

**CQS: 90.7**



### Color parameters

Color temperature	Color rendering index	Red component	Color fidelity	Color gamut	Color quality scale	Color coordinate cie 1931	Color coordinate cie 1931	Color coordinate	Color coordinate	Color deviation from black body
CCT	CRI	CRI R9	TM30 Rf	TM30 Rg	CQS	x	y	u	v	Δuv
5781 K	89.6	83.4	88.3	107.4	90.7	0.327	0.333	0.206	0.315	-0.0014

# TM-30 details

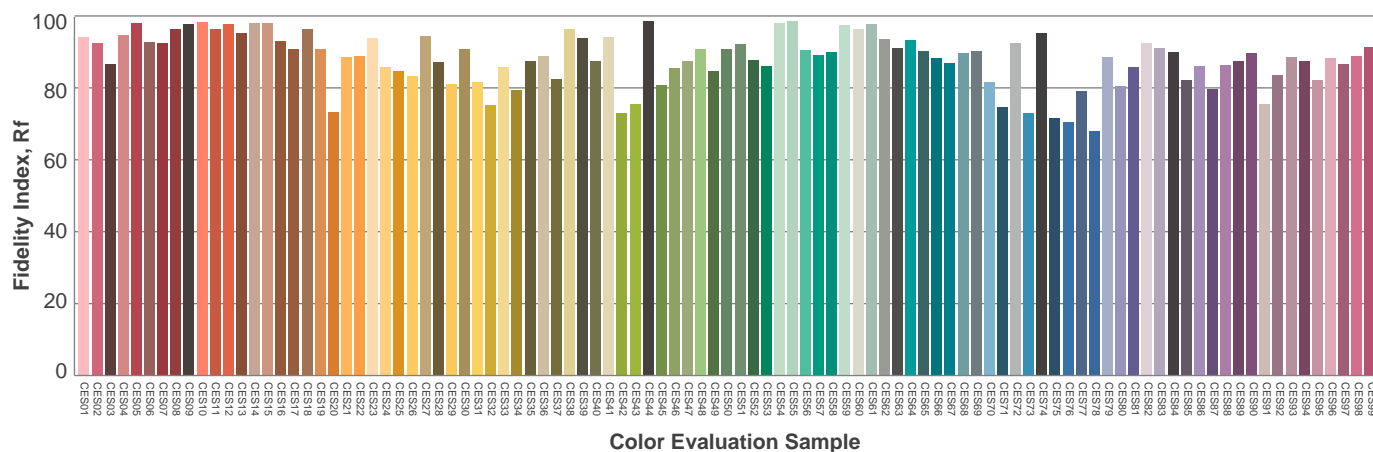
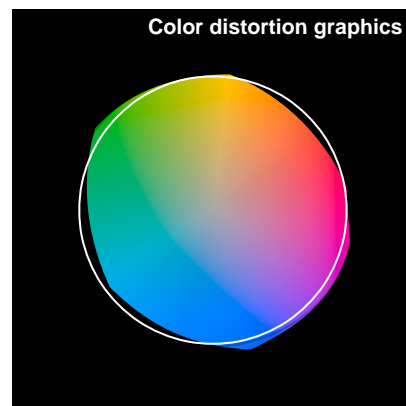
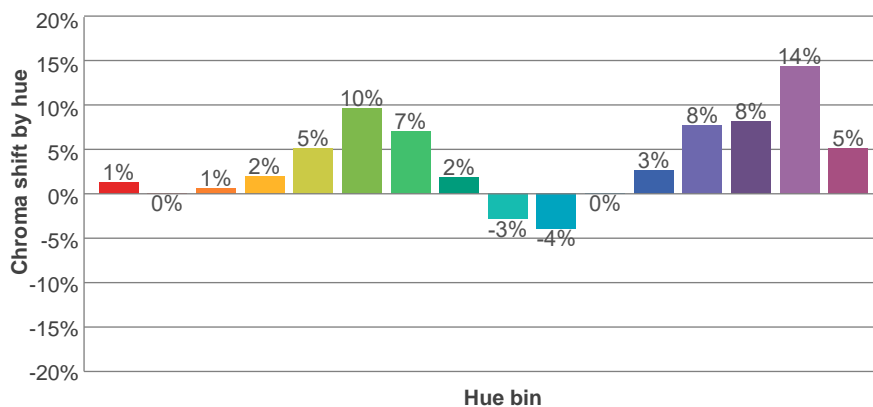
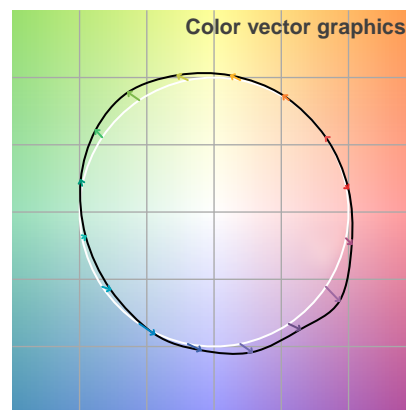
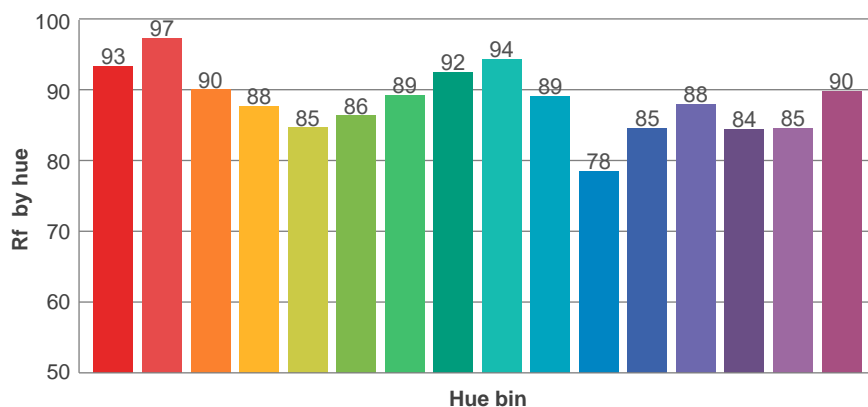
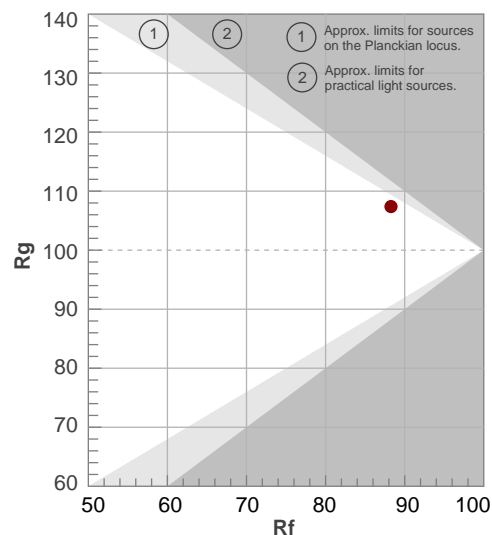
**Rf 88.3**

Fidelity index Rf

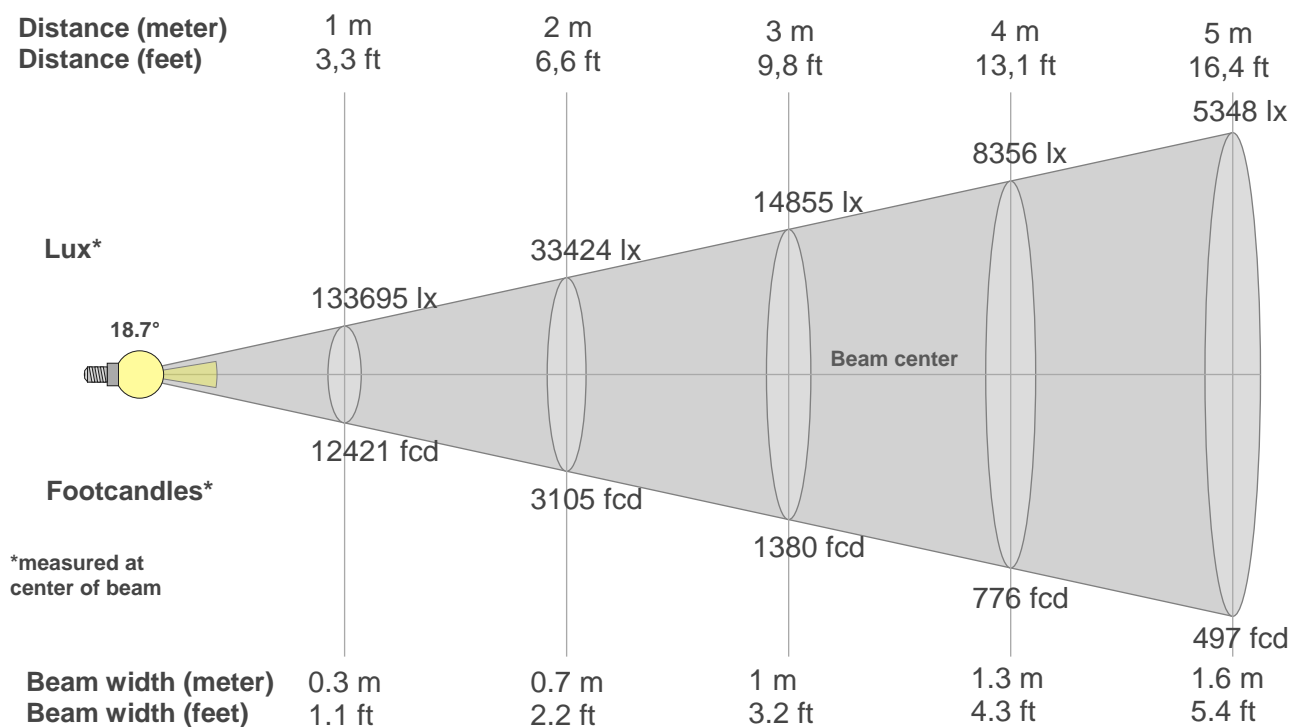
**Rg 107.4**

Gamut index Rg

Hue Bin	R <sub>f</sub>	Shifts (%)	
		Chroma	Hue
1	93	1%	-2%
2	97	0%	0%
3	90	1%	5%
4	88	2%	7%
5	85	5%	7%
6	86	10%	4%
7	89	7%	-2%
8	92	2%	-4%
9	94	-3%	-1%
10	89	-4%	5%
11	78	0%	13%
12	85	3%	10%
13	88	8%	7%
14	84	8%	5%
15	85	14%	-3%
16	90	5%	-3%



## Beam details



### Beam intensities from 1-20m

1m	2m	3m	4m	5m	6m	7m	8m	9m	10m	11m	12m	13m	14m	15m	16m	17m	18m	19m	20m
3.3ft	6.6ft	9.8ft	13.1ft	16.4ft	19.7ft	23ft	26.2ft	29.5ft	32.8ft	36.1ft	39.4ft	42.7ft	45.9ft	49.2ft	52.5ft	55.8ft	59.1ft	62.3ft	65.6ft
133695lx	33424lx	14855lx	8356lx	5348lx	3714lx	2728lx	2089lx	1651lx	1337lx	1105lx	928lx	791lx	682lx	594lx	522lx	463lx	413lx	370lx	334lx
12420.7fcd	3105.2fcd	1380.1fcd	776.3fcd	496.8fcd	345fcd	253.5fcd	194.1fcd	153.3fcd	124.2fcd	102.7fcd	86.3fcd	73.5fcd	63.4fcd	55.2fcd	48.5fcd	43fcd	38.3fcd	34.4fcd	31.1fcd

### Intensities in 0° c-plane

0°	1°	2°	3°	4°	5°	6°	7°	8°	9°	10°	11°	12°	13°	14°	15°	16°	17°	18°	19°
134k	134k	136k	137k	135k	129k	118k	105k	89k	74k	58k	45k	33k	25k	19k	14k	11k	9k	8k	6k
100%	100%	102%	102%	101%	96%	89%	78%	67%	55%	44%	33%	25%	19%	14%	11%	9%	7%	6%	5%

### Intensities in 90° c-plane

0°	1°	2°	3°	4°	5°	6°	7°	8°	9°	10°	11°	12°	13°	14°	15°	16°	17°	18°	19°
134k	134k	136k	137k	135k	129k	118k	105k	89k	74k	58k	45k	33k	25k	19k	14k	11k	9k	8k	6k
100%	100%	102%	102%	101%	96%	89%	78%	67%	55%	44%	33%	25%	19%	14%	11%	9%	7%	6%	5%

### Intensities in 180° c-plane

0°	1°	2°	3°	4°	5°	6°	7°	8°	9°	10°	11°	12°	13°	14°	15°	16°	17°	18°	19°
134k	134k	136k	137k	135k	129k	118k	105k	89k	74k	58k	45k	33k	25k	19k	14k	11k	9k	8k	6k
100%	100%	102%	102%	101%	96%	89%	78%	67%	55%	44%	33%	25%	19%	14%	11%	9%	7%	6%	5%

### Intensities in 270° c-plane

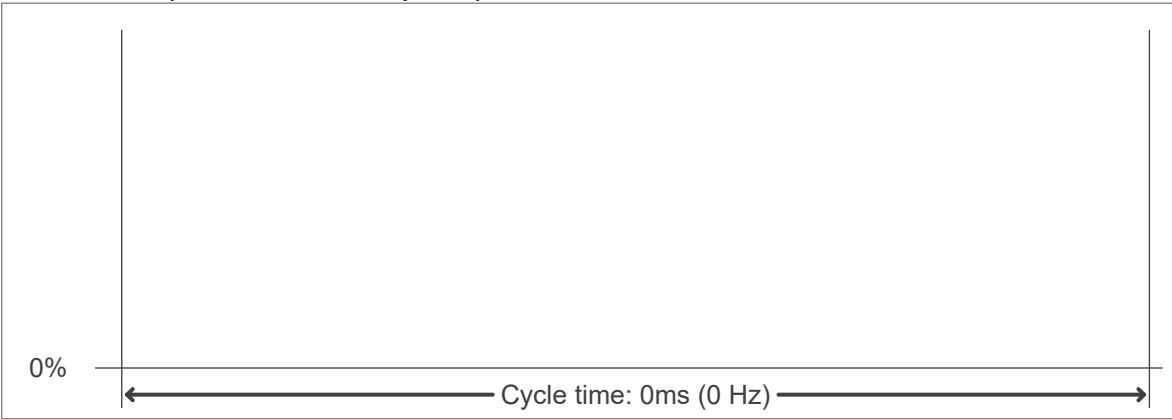
0°	1°	2°	3°	4°	5°	6°	7°	8°	9°	10°	11°	12°	13°	14°	15°	16°	17°	18°	19°
134k	134k	136k	137k	135k	129k	118k	105k	89k	74k	58k	45k	33k	25k	19k	14k	11k	9k	8k	6k
100%	100%	102%	102%	101%	96%	89%	78%	67%	55%	44%	33%	25%	19%	14%	11%	9%	7%	6%	5%

Beam angle 50%	Field angle 10%	Cutoff angle 2,5%	Intensity ratio in 120° cone	Intensity ratio in 90° cone
18.7°	30.5°	46.8°	96.4%	93.5%

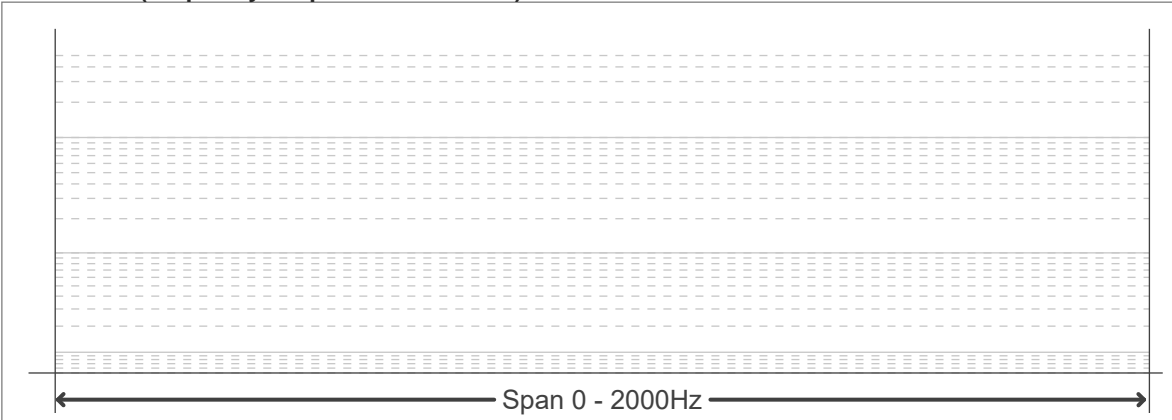
Flicker curve (complete sampled flicker signal)



Flicker frame (frame of one flicker period)



Flicker FFT (frequency scope of flicker curve)



Flicker results:

Flicker frequency:		n/a Hz	
Flicker index:	n/a	JA8/10 40Hz	n/a %
Flicker percentage:	n/a %	JA8/10 90Hz	n/a %
SVM: (Visual flicker)	n/a	JA8/10 200Hz	n/a %
PstLM	n/a	JA8/10 400Hz	n/a %
Mp	n/a	JA8/10 1000Hz	n/a %

Flicker conditions:

Sample rate:	n/a samples/second
--------------	--------------------